

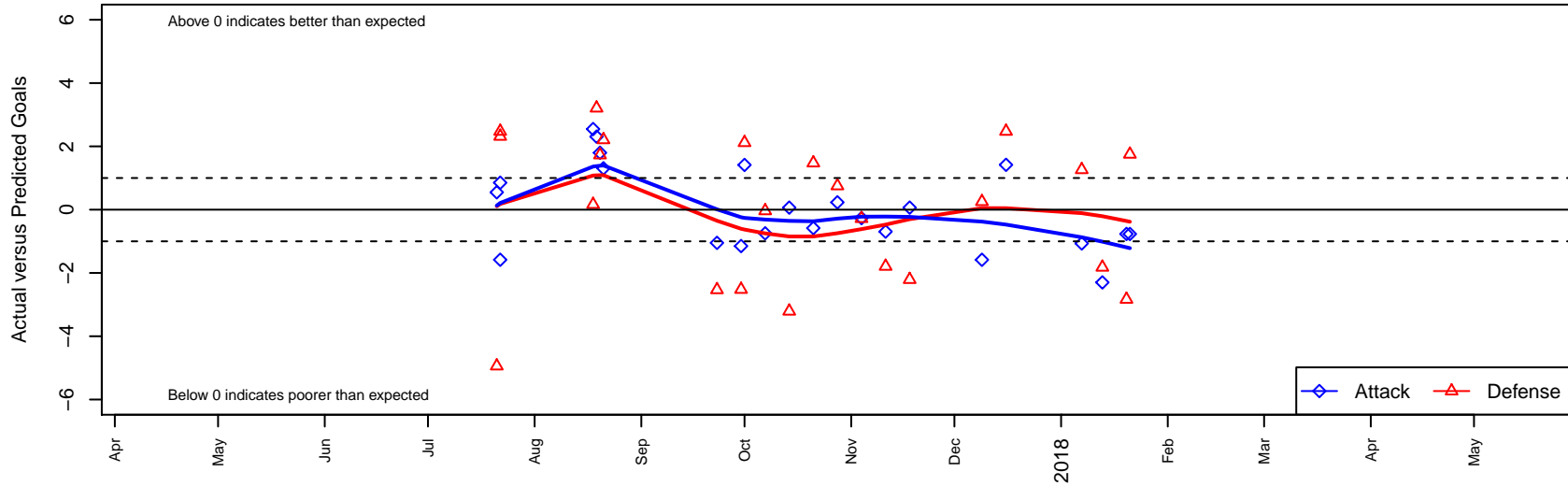
Seattle United W White B05

Seattle United Regional
 Seattle, WA
 B05 total strength=458
 attack=0.45 defense=0.21
 fall league = NPSL DIVISION 2 (05) U13
 notes= White 2016

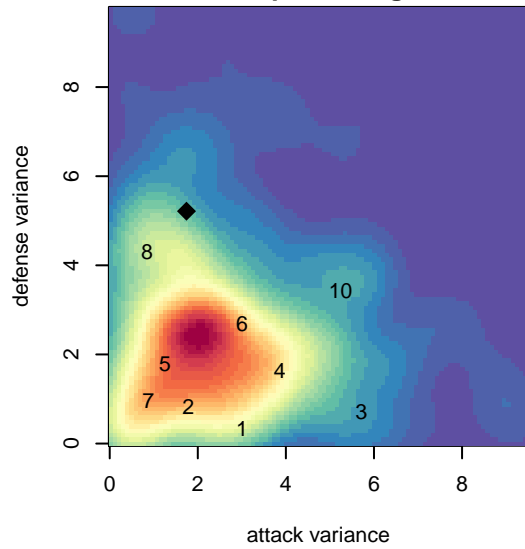
alt names used:
 Seattle United West B05 White
 SEATTLE UNITED WHITE WEST (WA)
 Seattle United White West 05
 Seattle United West B05 White

Venues played:
 2017 Sounders FC Cup BU13 Silver
 2017 Bigfoot Silver 2 U13
 2017 NPSL DIVISION 2 (05) U13
 2017 Founders Cup B05 Div A

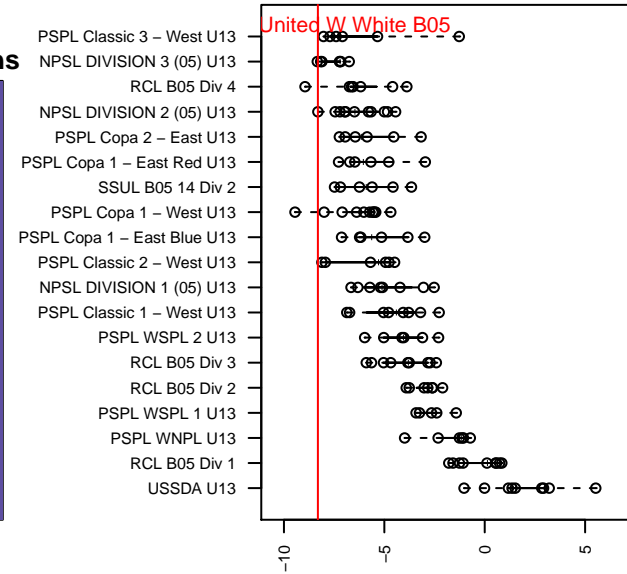
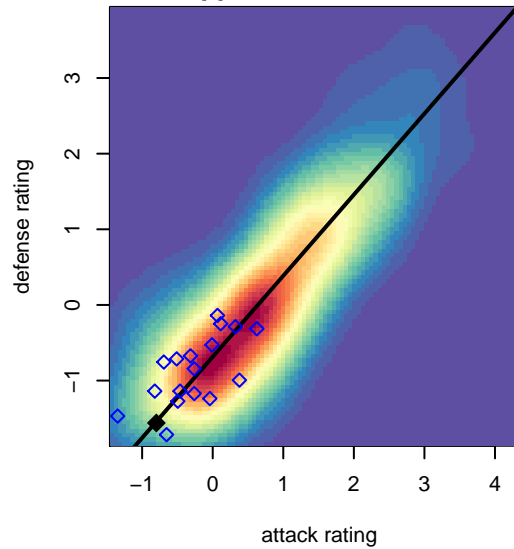
Seattle United W White B05
 Dots are actual minus expected GF (blue circles) and GA (red triangles).
 Blue line is smoothed change in attack strength. Red is smoothed change in defense strength.



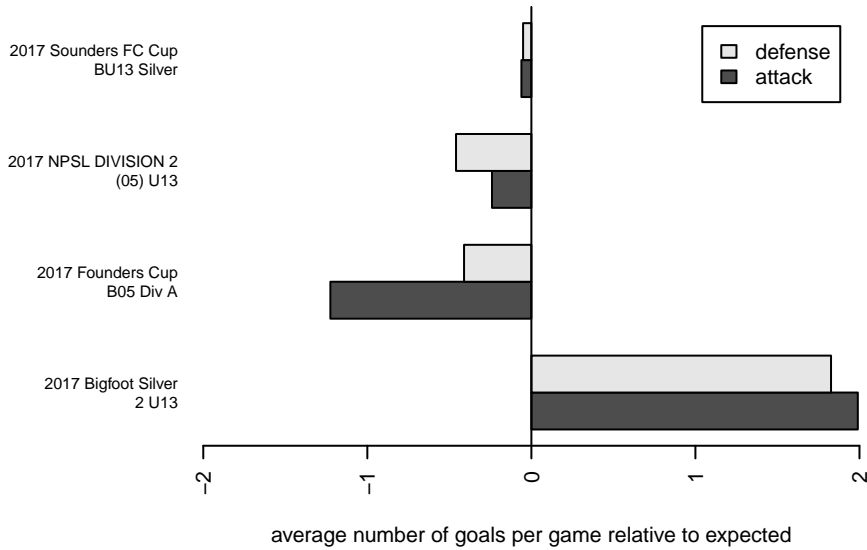
**attack and defense variance (black dot)
relative to other teams
and top 10 in region**



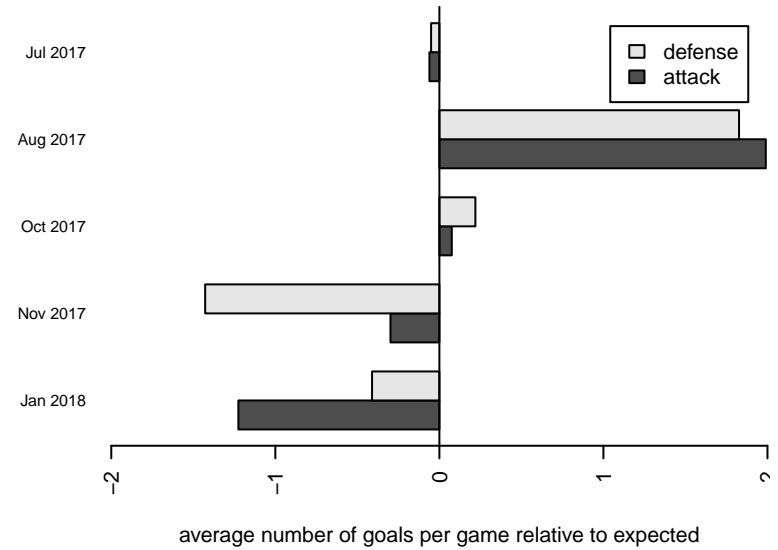
**attack and defense rating
relative to others at age
and all opponents in last 13 months**



Performance relative to 13 month average



Performance relative to 13 month average



date	home		away		venue	pred.home	pred.away
2018-01-21	BIFC Blue B05	7	Seattle United W White B05	0	2017 Founders Cup B05 Div A	8.75	0.77
2018-01-20	Crossfire Select Zlateff B05	8	Seattle United W White B05	0	2017 Founders Cup B05 Div A	5.17	0.77
2018-01-13	Seattle United W White B05	1	Lake Hills Blue Devils B05	4	2017 Founders Cup B05 Div A	3.30	2.18
2018-01-07	Seattle United W White B05	0	Newport FC Predators B05	2	2017 Founders Cup B05 Div A	1.07	3.26
2017-12-16	Seattle United W White B05	3	NWSC Deception FC Black B05	1	2017 NPSL DIVISION 2 (05) U13	1.58	3.47
2017-12-09	Storm King B05	7	Seattle United W White B05	0	2017 NPSL DIVISION 2 (05) U13	7.25	1.58
2017-11-18	Seattle United W White B05	2	Seattle United S White B05	5	2017 NPSL DIVISION 2 (05) U13	1.94	2.79
2017-11-11	PSA Force Black B05	7	Seattle United W White B05	0	2017 NPSL DIVISION 2 (05) U13	5.21	0.69
2017-11-04	Seattle United W White B05	1	NSC White B05	4	2017 NPSL DIVISION 2 (05) U13	1.27	3.72
2017-10-28	Seattle United W White B05	1	BIFC Blue B05	8	2017 NPSL DIVISION 2 (05) U13	0.77	8.75
2017-10-21	NWSC Deception FC Black B05	2	Seattle United W White B05	1	2017 NPSL DIVISION 2 (05) U13	3.47	1.58
2017-10-14	Seattle United S White B05	6	Seattle United W White B05	2	2017 NPSL DIVISION 2 (05) U13	2.79	1.94
2017-10-07	Seattle United W White B05	0	Seattle United Shoreline Blue B05	7	2017 NPSL DIVISION 2 (05) U13	0.75	6.96
2017-10-01	Seattle United W White B05	3	Mukilteo Rush B05	1	2017 NPSL DIVISION 2 (05) U13	1.59	3.12
2017-09-30	Mercer Island FC Maroon B05	5	Seattle United W White B05	0	2017 NPSL DIVISION 2 (05) U13	2.48	1.15
2017-09-23	Southlake Select Red B05	7	Seattle United W White B05	0	2017 NPSL DIVISION 2 (05) U13	4.47	1.05
2017-08-21	Seattle United W White B05	2	PSA Force Black B05	3	2017 Bigfoot Silver 2 U13	0.69	5.21
2017-08-20	Seattle United W White B05	4	Crossfire Premier E B05	2	2017 Bigfoot Silver 2 U13	2.20	3.73
2017-08-19	PSA Force Black B05	2	Seattle United W White B05	3	2017 Bigfoot Silver 2 U13	5.21	0.69
2017-08-18	Kitsap Alliance FC White B05	1	Seattle United W White B05	5	2017 Bigfoot Silver 2 U13	1.16	2.45
2017-07-22	Seattle United W White B05	2	Norpoint FC B05	1	2017 Sounders FC Cup BU13 Silver	1.15	3.32
2017-07-22	NWSC Deception FC Black B05	1	Seattle United W White B05	0	2017 Sounders FC Cup BU13 Silver	3.47	1.58
2017-07-21	ISC Gunners C B05	8	Seattle United W White B05	2	2017 Sounders FC Cup BU13 Silver	3.06	1.45